



# Installing Sentry-go Enterprise Reporting

for Sentry-go Quick & Plus! monitors


© 3Ds (UK) Limited, February, 2014  
<http://www.Sentry-go.com>

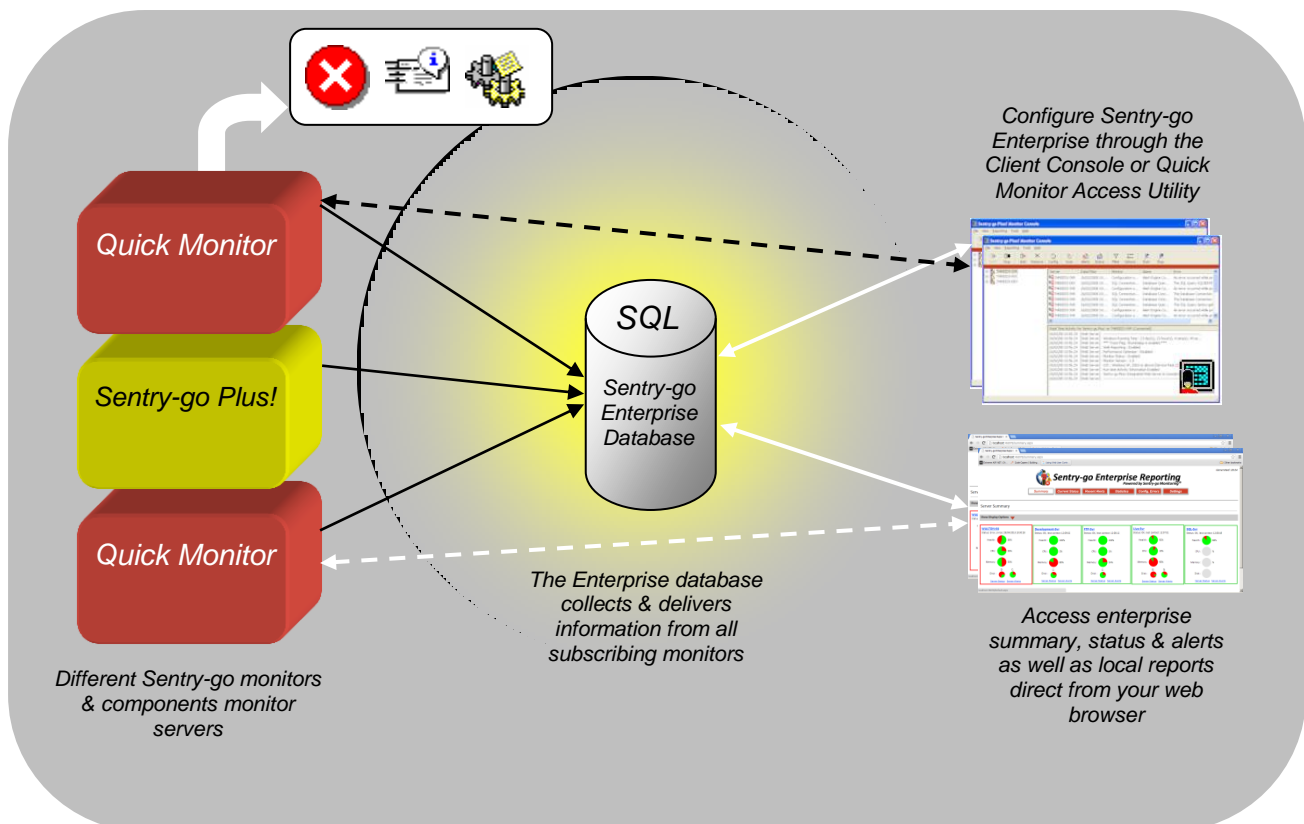
Be Proactive, Not Reactive!

## Introduction

Thank you for choosing Sentry-go as your monitoring solution.

Sentry-go Enterprise Reporting is a self-contained system which uses a central SQL Server database to collect & collate monitored information from around the Sentry-go environment. This information is then centrally available through a number of web reports – either directly from the monitor or through an IIS-based web site (Sentry-go Enterprise/ASPX), allowing enterprise-wide reporting, as opposed to standard reports which are based per server.

 The Enterprise Option is an optional add-on. Sentry-go monitors can work with, or without it as required.



Sentry-go Enterprise System

## System Requirements

Sentry-go Enterprise Reporting requires ...

- Windows Server 2003, 2008, 2008R2, 2012 or later.
- Access to SQL Server.
- Sentry-go Quick Monitors v6.x or later or Sentry-go Plus! v6.x or later.

## Installing the Enterprise system

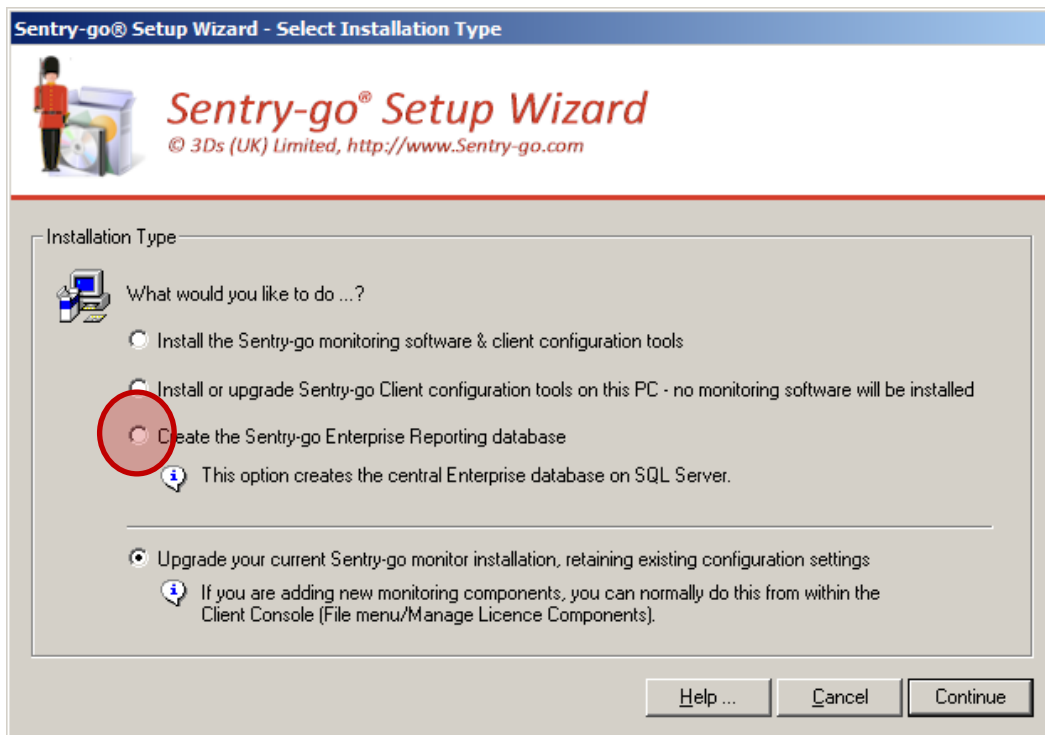
Sentry-go Enterprise Reporting requires access to a single SQL Server database from each subscribing monitor. To create the installation, please follow these steps ...

- **Create a SQL Server user for use with Sentry-go.**

Using SQL Management tools, create a user that the Setup Wizard can use to access to the SQL Server. This user must have permission to create databases. To use a trusted connection, configure the appropriate Windows user.

- **Create a SQL Server Enterprise database.**

To do this, run the Sentry-go Setup Wizard and select the 3<sup>rd</sup> option, "Create the Sentry-go Enterprise Reporting database" ...



This will connect to the above server using the user created previously to create & configure a new database. If you are using a trusted connection, run the Setup Wizard using the appropriate Window user.

Once complete, you will be ready to configure individual monitors to subscribe to the new database. This is described below.

## Feeding the Enterprise system

Once created, each monitor feeds (or “subscribes”) to the same database.

To do this as part of the initial Setup ...

- When prompted to subscribe to Enterprise Reporting by the Setup Wizard, select “I want to subscribe”.
- If required, enter your Enterprise Reporting licence key (this can be added below if required).
- Now enter the name of the Enterprise database & the SQL Server it is defined on.
- Finally enter the SQL Server user & password if required.
- Setup will now create & configure an ODBC DSN using the above settings.
  
- To ensure the monitor is licenced for Enterprise Reporting ...
  - Run the Sentry-go Client Console.
  - Select the monitor & click “Manage Licence Components” from the File menu.
  - Verify or add the Enterprise Reporting licence.

To do this after Sentry-go has been installed using the Client Console, please follow these steps ...

- Ensure the monitor is licenced for the Enterprise Option ...
  - Run the Sentry-go Client Console.
  - Select the monitor & click “Manage Licence Components” from the File menu.
  - Verify or add the Enterprise Reporting licence.
  
- Logon to the server directly & create an ODBC entry that the monitor will use to access the SQL Server database created above ...
  - Create a new “System DSN” (data source) that can connect to SQL Server.
  - Connect to the SQL Server configured above.
  - Change the default database to the Enterprise database created above for this DSN.

## Enabling Enterprise Reporting

Everything should now be ready & configured. However, the monitor itself must pick up these settings before it will subscribe to the database and you can connect to it. To do this, click OK to close the configuration window. Within a few moments, the monitor will automatically reconfigure itself using the new settings.

To further configure the Enterprise settings, navigate to the “Enterprise” tab as described above and click “Configure”. A new set of Enterprise reports will also be added to the monitor’s home page.

## A Self-Contained System

Sentry-go Enterprise Reporting is a self-contained system. Connecting monitors will automatically feed the database with their current status, the status of checks & any alerts that are generated. Using the settings configured above, the system additionally verifies & house-keeps the data at regular intervals, removing old data as required.

## More Information

If you need more help or information on this topic ...

- Read all [papers/documents on-line](#).
- Watch [demonstrations & walkthrough videos on-line](#).
- Visit <http://www.Sentry-go.com>.
- Contact our [Support Team](#).



*Sentry-go, © 3Ds (UK) Limited, 2000-2014  
East Molesey, Surrey. United Kingdom  
T. 0208 144 4141  
W. <http://www.Sentry-go.com>*