




ODBC Data Source Administrator

© 3Ds (UK) Limited, October, 2013
<http://www.Sentry-go.com>

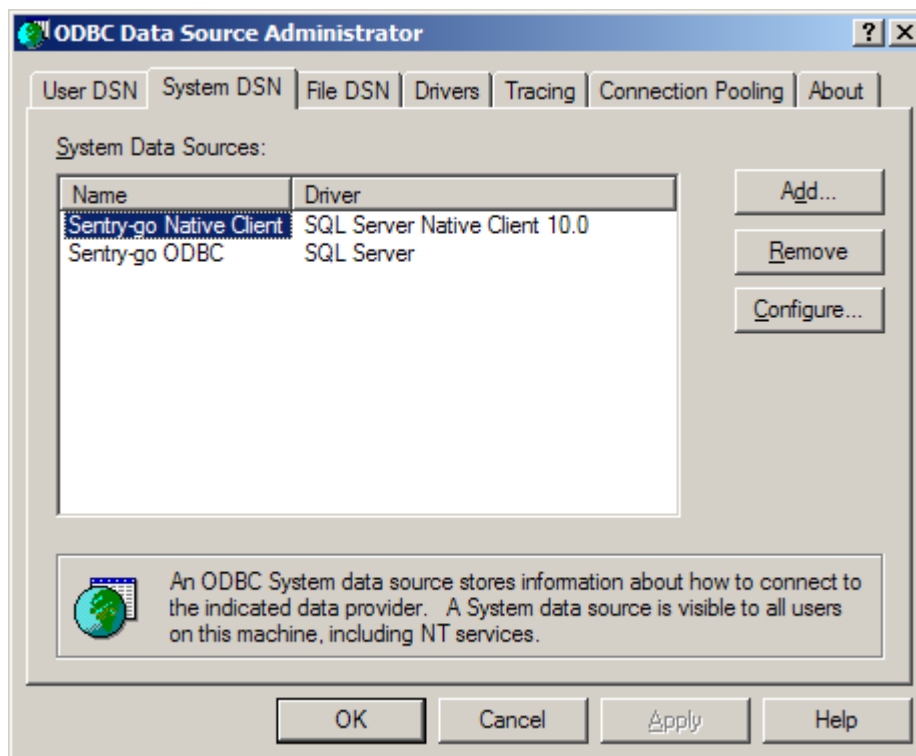
Be Proactive, Not Reactive!

On a Windows PC or server, the ODBC Data Source Administrator is used to configure & maintain ODBC connections. It is accessed from Windows Administrative Tools or by running ODBCAD32.EXE.

-  If you are running a 64-bit version of Windows, there are two versions of this utility. The 64-bit version can be accessed through Control Panel, while the 32-bit version can be accessed through the 32-bit Control Panel or the <Windows>\SysWow64 folder.

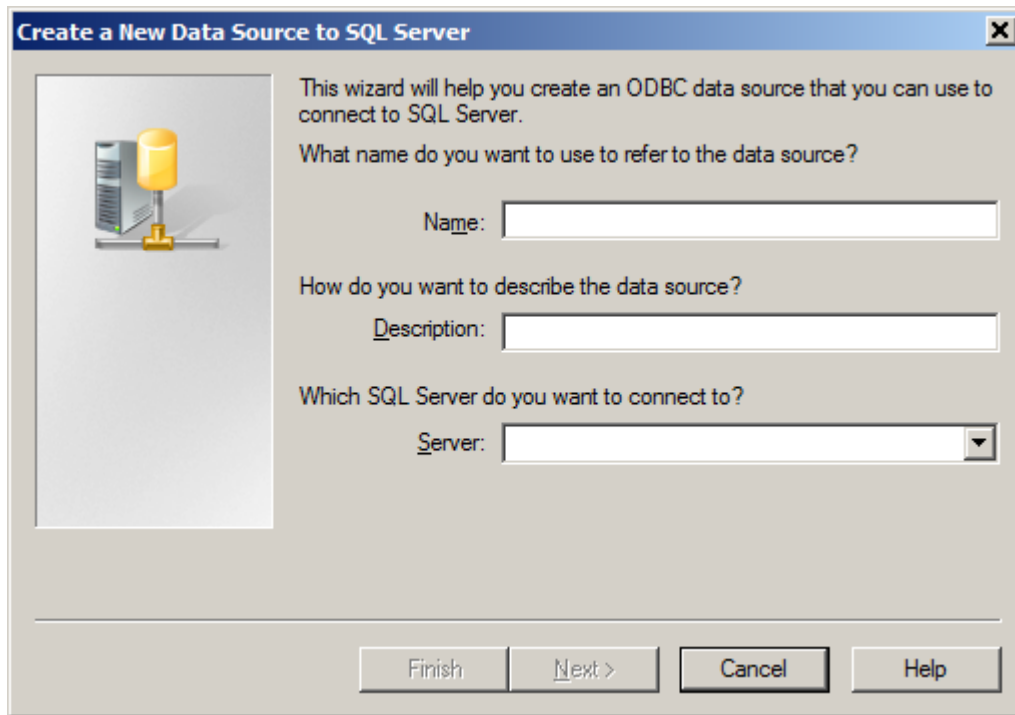
On 64-bit versions of Windows it is important to run the correct version of the utility.

The ODBC Data Source Administrator looks like this ...



- When creating a data source for use with Sentry-go, always use the 32-bit Administrator and create System DSNs. This will allow the monitoring service to access the configured information.
- To create a new connection, select the "System DSN" tab, then click "Add".
- Select the appropriate driver (e.g. SQL Server) and click "Finish".

- The driver's connection wizard will be displayed. This will look something like this ...

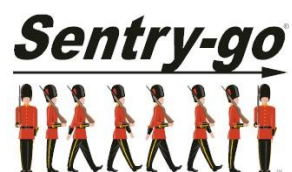


- The Wizard will guide you through the creation process.
- Once complete, the new ODBC connection will be added to the list. This connection can then be accessed & used by Sentry-go.

More Information

If you need more help or information on this topic ...

- Read all [papers/documents on-line](#).
- Watch [demonstrations & walkthrough videos on-line](#).
- Visit <http://www.Sentry-go.com>.
- Contact our [Support Team](#).



*Sentry-go, © 3Ds (UK) Limited, 2000-2013
East Molesey, Surrey, United Kingdom
T. 0208 144 4141
W. <http://www.Sentry-go.com>*