



Configuring Sentry-go Enterprise Reporting


With Sentry-go Quick & Plus! monitors

© 3Ds (UK) Limited, February, 2014

<http://www.Sentry-go.com>

Be Proactive, Not Reactive!

Sentry-go Enterprise Reporting is a self-contained system which uses a central SQL Server database to collect & collate monitored information from around your monitored environment. This information is then centrally available through a number of web reports – either directly from the monitor or through an IIS-based web site (Sentry-go Enterprise/ASPX), allowing enterprise-wide reporting, as opposed to standard reports which are based per server.

 Enterprise Reporting is an optional add-on. Sentry-go monitors can work with or without it as required.

In this guide

System requirements	2
Feeding the Enterprise system	2
Configuring Enterprise Settings	4
More Information	7

System requirements

Enterprise reporting is fully compatible with both Sentry-go Quick Monitors v6 and above, and Sentry-go Plus! v6 monitors and above. You will need connectivity to a central SQL Server database from each monitor in order to capture data.

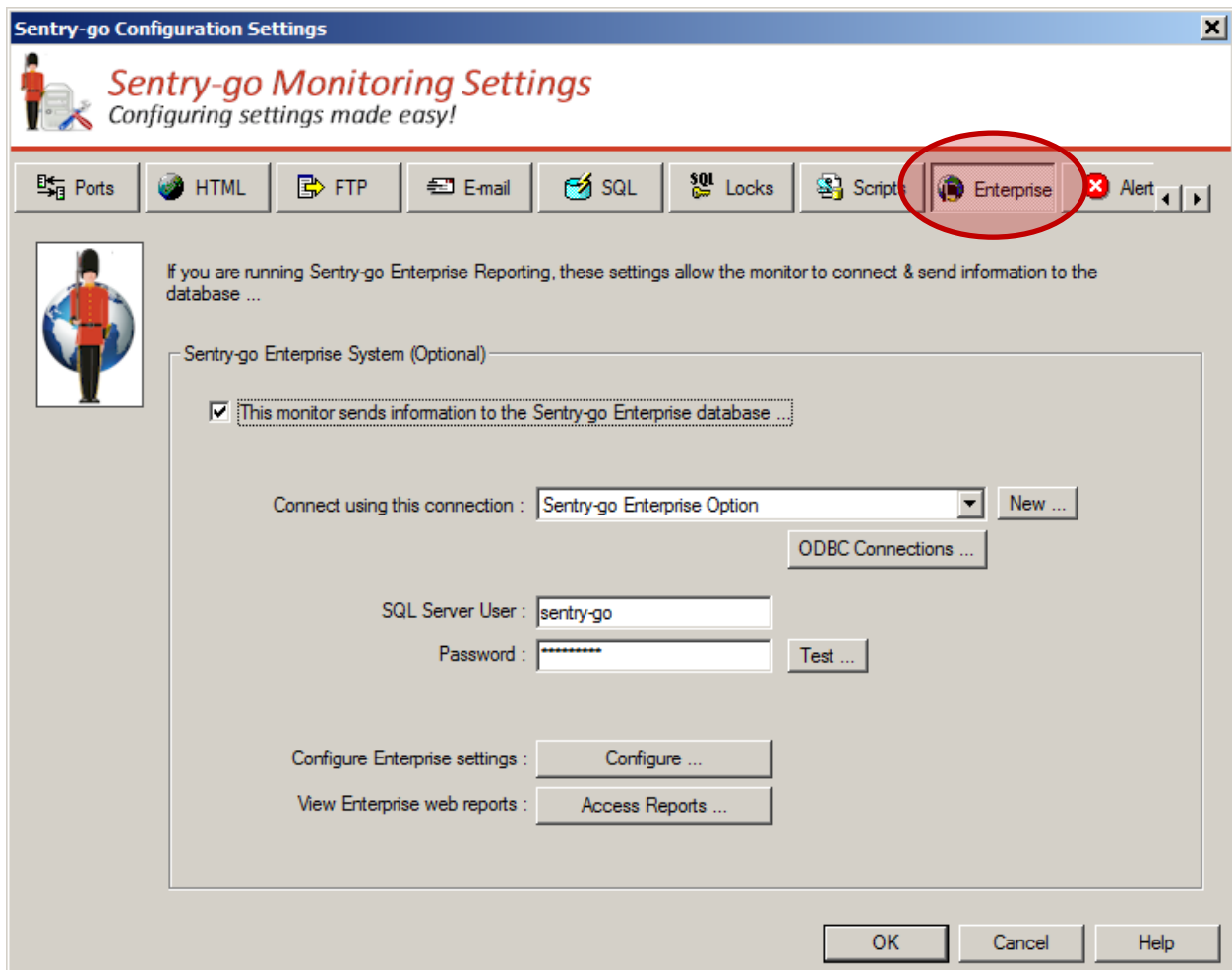
Feeding the Enterprise system

To operate, Sentry-go monitors connect (or “subscribe”) to the Enterprise database running on SQL Server. Once connected, they feed information directly to the database as required – e.g. status information, alerts & configuration details in real-time.

The connection also allows the monitor to read the same database in order to generate additional Enterprise level reports through its integrated web server. The same details are also available through Enterprise/ASPX using an IIS web server.

- Before a monitor can subscribe to the Enterprise system, the target database must be installed & configured on a SQL Server that is accessible to it. For information on doing this, please see the appropriate installation guide.

To define the connection, you can either create it when installing or upgrading the Quick Monitor or Sentry-go Plus!, or you can configure it later for the monitor. To do this, configure the appropriate monitor and select the “Enterprise” tab ...



Subscribe to the Enterprise System


Check (tick) this option if you want the monitor to ...

- Forward information to the Enterprise database
- Have access to Enterprise web reporting

Connect to the Enterprise database using this ODBC DSN


Select the ODBC data source that will be used to connect to the SQL Server database from the monitor. This data source, which may have been created using the Sentry-go Setup Wizard during installation or upgrade should have the following settings ...

- Connect to the SQL Server on which the Enterprise database is defined
- Have its default database set to the Enterprise database

 To create a new DSN, or view/configure an existing one, click the “ODBC Connections ...” button.

SQL Server User

If a SQL Server user is defined for this connection, enter it here. For trusted connections, leave this field blank.

 If you are using a trusted connection, the monitoring service itself must run as a user with access to the SQL Server database in order to function.

See the “Using SQL Server Trusted Connections” guide for more information.

Password

This is the password for the above user. For trusted connections, leave this field blank.

Testing Access

To test access using the above configuration settings, click the “Test” button. This will connect to the monitor being configured so that it can verify the settings entered.

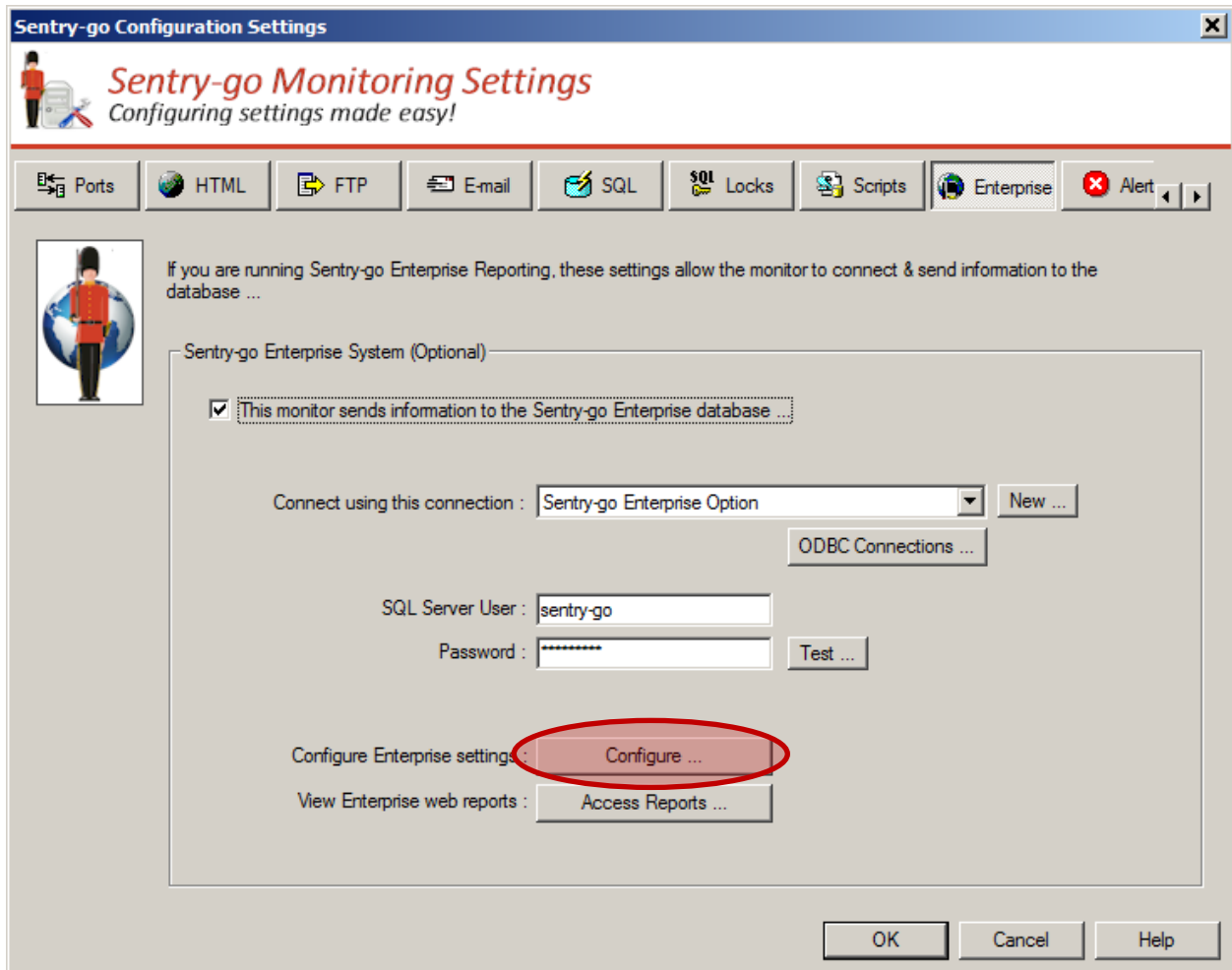
The test will verify ...

- The ODBC connection is available
- A connection can be made to the SQL Server
- The database defined is accessible
- The database defined is a valid Enterprise system database

Configuring Enterprise Settings

The Sentry-go Enterprise system is a global resource and as such stores its settings centrally within its own database. You can configure these settings, however, from the Configuration utility by configuring any monitor that subscribes to it.

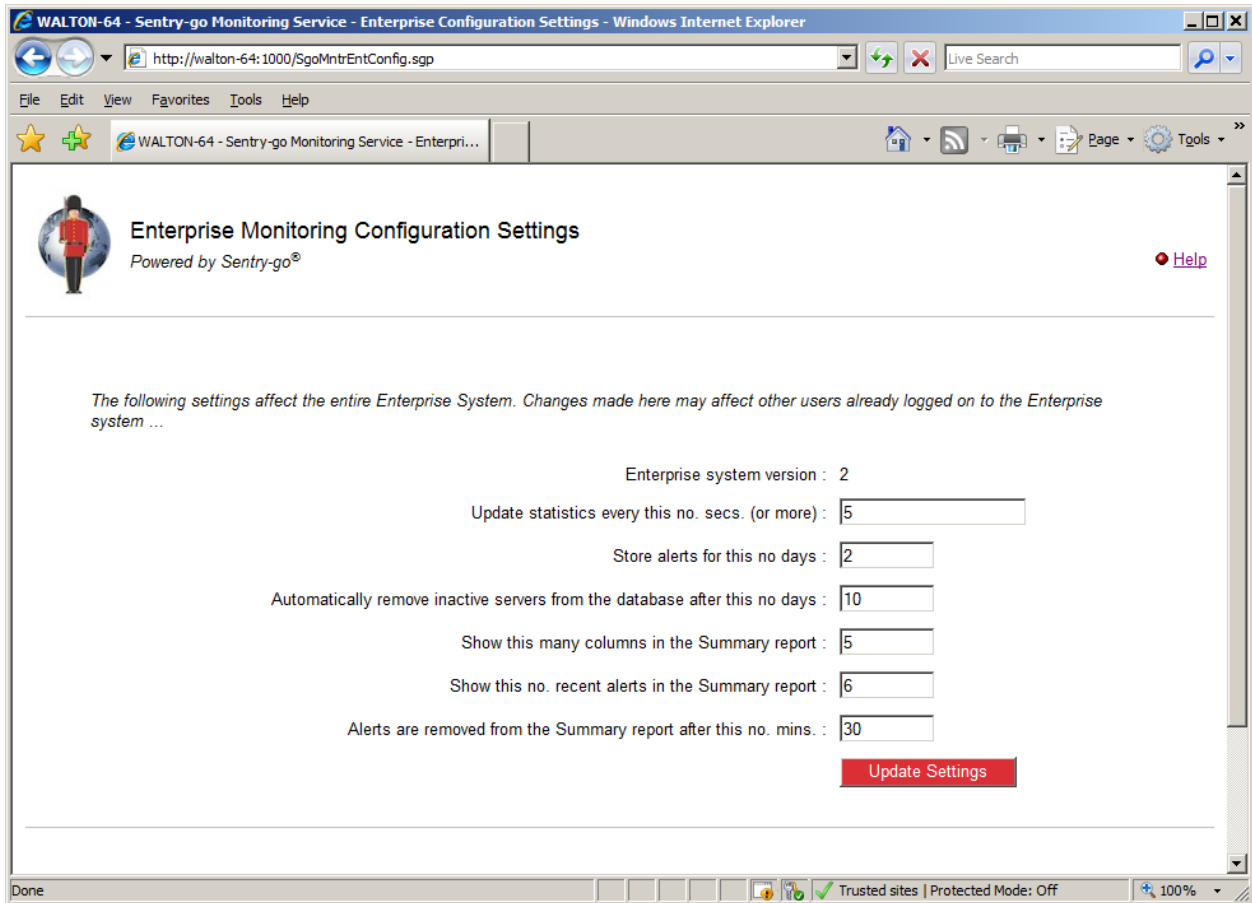
To configure Enterprise settings, configure the appropriate monitor and select the “Enterprise” tab.



Assuming the subscription (connection) information is valid, click the “Configure” button. This will display the Enterprise settings in a web page; settings can also be edited from here.


- ⚠ As a global resource, settings changed here will affect all users/monitors connecting to the Enterprise database. Care should be taken when editing configured values.

The following settings are defined and can be edited for Enterprise Reporting ...




Update statistics every this no. secs. (no more)

This value can be used to control how often a monitor's statistics are recorded. In particular it is used to restrict the number of updates in quick succession. The monitor will wait at least this no. seconds after statistics are updated before updating them again.

-  The lower the value, the more up to date statistics for a given history will be. However, this is at the expense of overall database performance.

Store alerts for this no days

This value determines how long alert information is stored in the Enterprise database before it is automatically deleted by the housekeeping system.

-  The higher the value, the more history is available, but, depending on the number of alerts triggered, the larger the database will become.

Automatically remove inactive servers from the database after this no days

This value determines how long a Sentry-go monitor's details (statistics etc.) are retained in the database.

If the monitor does not interact with the Enterprise database after this no. days, its details will automatically be removed by the housekeeping process.

Show this many columns in the Summary report

This value determines how many columns are shown in the summary report. The default value is 5.


Show this no. recent alerts in the Summary report

This value determines how many alerts are shown in the recent alerts report when the "Show Recent Alerts" tick box is enabled. The default value is 6.

Alerts are removed from the Summary report after this no. mins

This value determines the alerts that are displayed in the summary report when the "Show Recent Alerts" tick box is enabled.

The most recent alerts are shown. However, alerts are only listed if they occurred within the last X minutes (X being the figure defined here). The default value is 30 minutes.

 The Sentry-go Enterprise system is self-maintaining. Settings such as these allow connecting monitors to perform housekeeping as and when required.

When complete, click 'Update Settings' to save these values to the database. Configuration settings are updated dynamically; there is no need to restart the database or server(s) to pick up any changes.

More Information

If you need more help or information on this topic ...

- Read all [papers/documents on-line](#).
- Watch [demonstrations & walkthrough videos on-line](#).
- Visit <http://www.Sentry-go.com>.
- Contact our [Support Team](#).



*Sentry-go, © 3Ds (UK) Limited, 2000-2014
East Molesey, Surrey, United Kingdom
T. 0208 144 4141
W. <http://www.Sentry-go.com>*