



Configuring Available Disk Space Monitoring

With Sentry-go Quick & Plus! monitors

© 3Ds (UK) Limited, November, 2013

<http://www.Sentry-go.com>

Be Proactive, Not Reactive!

As with all computer systems, your servers, desktops & applications require disk space to function correctly. This is required not only to save your own data, but also applications, their data (such as databases, mailboxes, spool files) and for Windows itself to operate. For example, in low memory conditions where data and logic is temporarily written (or “swapped out”) to one or more paging files on disk.

Ensuring that sufficient disk space is available on your server at all times is therefore important for the smooth running of critical systems. Sentry-go allows you to do this with ease & this guide gives full details of how you can achieve this.

In this guide

System requirements	2
Recommended monitoring settings	2
Monitoring database connectivity & SQL queries	2
Configuring Disk Monitoring	3
Scheduling a check	4
Temporarily ignoring a configured check	4
Configuring an automatic response	5
Configuring an alert	5
More Information	6

System requirements

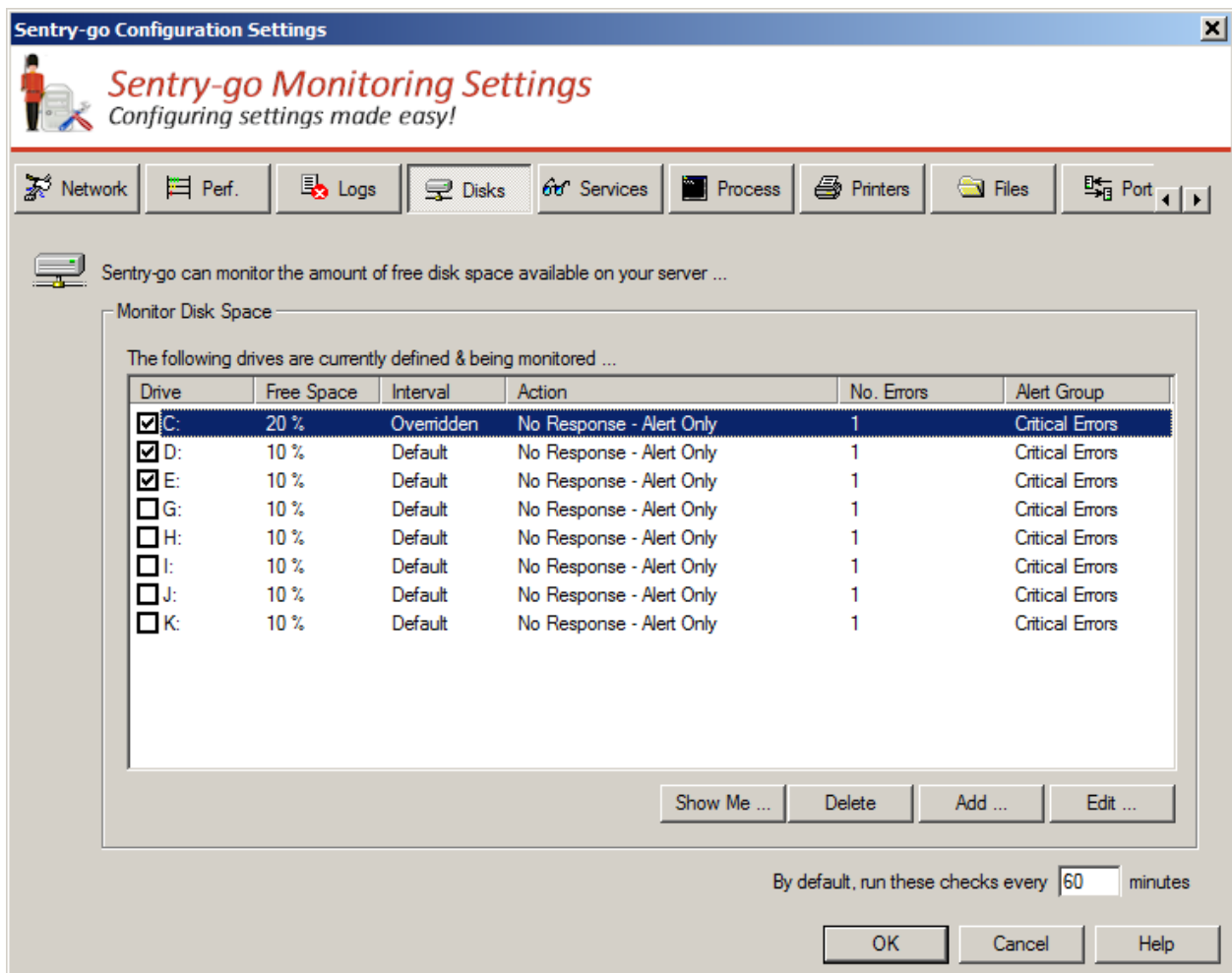
This component is fully compatible with both Sentry-go Quick Monitors v6 and above, and Sentry-go Plus! v6 monitors and above.

Recommended monitoring settings

It is recommended that local hard disks - especially system volumes and disks that store temporary files are checked, every 3 hours for 20% free space.

Monitoring available disk space

To set up monitoring, configure the appropriate monitor and select the “Disks” tab.



The screenshot shows the 'Sentry-go Configuration Settings' window with the 'Disks' tab selected. The window title is 'Sentry-go Configuration Settings' and the subtitle is 'Sentry-go Monitoring Settings Configuring settings made easy!'. The 'Disks' tab is active, showing a table of monitored drives. The table has columns for Drive, Free Space, Interval, Action, No. Errors, and Alert Group. The drives listed are C:, D:, E:, G:, H:, I:, J:, and K:. The C: drive is selected and has a free space of 20% and an interval of 'Overidden'. The other drives have a free space of 10% and a default interval. The action for all drives is 'No Response - Alert Only', the number of errors is 1, and the alert group is 'Critical Errors'. Below the table are buttons for 'Show Me ...', 'Delete', 'Add ...', and 'Edit ...'. At the bottom, there is a checkbox for 'Monitor Disk Space' and a text box for the interval, set to 60 minutes. The 'OK', 'Cancel', and 'Help' buttons are at the bottom right.

Drive	Free Space	Interval	Action	No. Errors	Alert Group
<input checked="" type="checkbox"/> C:	20 %	Overidden	No Response - Alert Only	1	Critical Errors
<input checked="" type="checkbox"/> D:	10 %	Default	No Response - Alert Only	1	Critical Errors
<input checked="" type="checkbox"/> E:	10 %	Default	No Response - Alert Only	1	Critical Errors
<input type="checkbox"/> G:	10 %	Default	No Response - Alert Only	1	Critical Errors
<input type="checkbox"/> H:	10 %	Default	No Response - Alert Only	1	Critical Errors
<input type="checkbox"/> I:	10 %	Default	No Response - Alert Only	1	Critical Errors
<input type="checkbox"/> J:	10 %	Default	No Response - Alert Only	1	Critical Errors
<input type="checkbox"/> K:	10 %	Default	No Response - Alert Only	1	Critical Errors

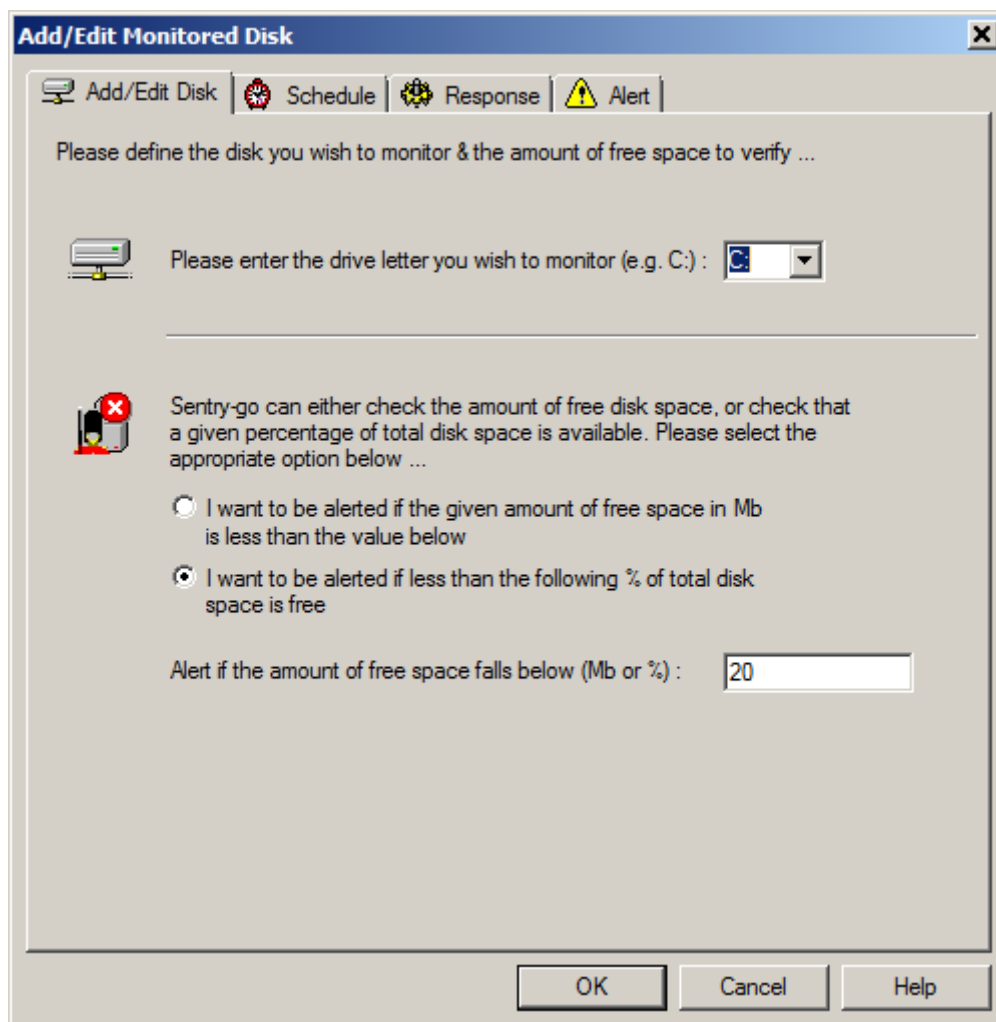
By default, run these checks every (minutes)

This value specifies how often, in minutes, Sentry-go should check for available space on the disks listed. For system drives and drives used by the print spooler, it is recommended that a more frequent check be performed - e.g. 5 - 15 minutes.

This interval is only used when the interval is set to "Default". You can also configure the monitor to check a particular drive at a given time or interval – e.g. hourly, daily etc. To do this, edit the particular disk from the list or configure the interval when the disk is added to the list.

Configuring Disk Monitoring

To monitor a new disk or edit an existing one, select the Add or Edit option from the main window.



From here you can define which drive is to be monitored and the amount of free space you wish to verify.

Please enter the drive letter you wish to monitor

Enter or select the local fixed disk you want the monitor to verify. For example, C: or D: etc.

I want to be alerted if the given amount of free space in Mb is less than the value below

Select this option if you wish to check for a fixed amount of free space. In this case, the value entered below indicates the amount of available disk space - in Mb, that you wish to ensure is available.

I want to be alerted if less than the following % of total disk space is free

Select this option if you wish to check if a given % of the total size of the disk fixed is free. In this case, the value entered below indicates the percentage of free space to check for.

I want to be alerted if the amount of free space falls below (Mb or %)

Depending on the option above, this value specifies either the amount of free disk space (in Mb) or the percentage of free space that you wish to check for. If available space falls below this amount, an alert will be triggered.

Scheduling a check

By default, each check is performed periodically at regular intervals throughout the day. The frequency of these checks is determined by the value specified at the bottom of the main list.

However, there may be times when you wish to perform the check at a different time, maybe at a set time each day, or on certain days etc. To do this, select the "Schedule" tab.

For more information, please see the "Sentry-go Monitoring Schedule" guide.

Temporarily ignoring a configured check

In some cases, you may wish to exclude a check from monitoring without removing it permanently. To do this, simply remove the "tick" or check against the entry you wish to ignore in the main list.

Configuring an automatic response

In the event an error is detected, Sentry-go can be configured to optionally respond automatically - i.e. to take action itself.

To configure this, select entry from the list and click Edit. On the resulting window, select the “Response” tab.



For more information on the options available as well as details on how to configure automatic responses, please see the “Configuring Automatic Responses” guide.

Configuring an alert

In the event an error is detected and either no automatic response is defined or the response doesn't resolve the fault, an alert will be triggered. Depending on the monitor's general settings, you can either notify one or more contacts individually, or specify the alert group you wish to inform.

To configure these options, select the entry from the list and click Edit. On the resulting window, select the “Alert” tab.



For more information, please see the “Configuring Sentry-go Alerts” guide.

More Information

If you need more help or information on this topic ...

- Read all [papers/documents on-line](#).
- Watch [demonstrations & walkthrough videos on-line](#).
- Visit <http://www.Sentry-go.com>.
- Contact our [Support Team](#).



*Sentry-go, © 3Ds (UK) Limited, 2000-2013
East Molesey, Surrey, United Kingdom
T. 0208 144 4141
W. <http://www.Sentry-go.com>*